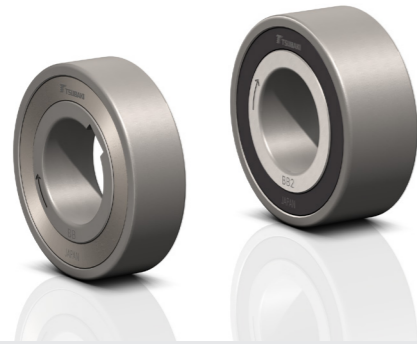


TSUBAKI MOTION CONTROL

LINE-UP





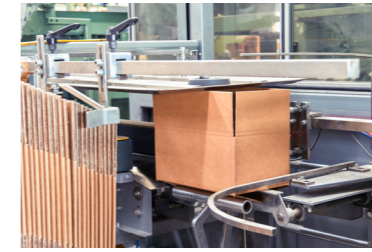
BB SERIES

- 5 Series BB, BB-1KK, BB-2KK, BB-2GD, BB-2GD-1KK
- 7 Bore sizes 15-40mm
- High Torque Capacity
- Single energizing spring constant 360° cam engagement
- Keys provided
- 6200 bearing dimensions

BALL BEARING



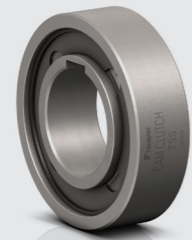
MECHANICAL SEED DRILL



PACKAGING MACHINERY



FLEXO PRINTER



TSS SERIES

- 12 Bore sizes 8-60mm
- High Torque Capacity
- High Inner race overrunning speeds
- Lower running temperature and wear rate = Longer Life
- Single energizing spring constant 360° cam engagement
- 6200 bearing dimensions

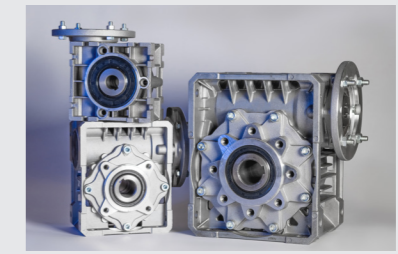
GENERATION 3



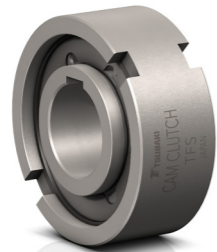
TEXTILE MACHINERY



FOOD PROCESSING MACHINERY



SMALL GEARMOTOR



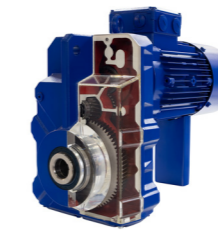
TFS SERIES

- 13 Bore sizes 12-80mm
- High Torque Capacity
- High Inner race overrunning speeds
- Lower running temperature = Longer Life
- Single energizing springs constant 360° cam engagement
- 6300 bearing dimensions

GENERATION 3



CAR WASH GANTRY



SHAFT MOUNT GEARBOX



DRUM MOTOR



MZEU SERIES

- 17 Bore sizes 12-150mm
- 7 Cam Clutch Models
- High Torque Capacity
- High Inner race overrunning speeds
- Lower running temperature = Longer life
- Grease lubrication (Up to 80mm)
- Single energizing springs constant 360° cam engagement

MODULAR



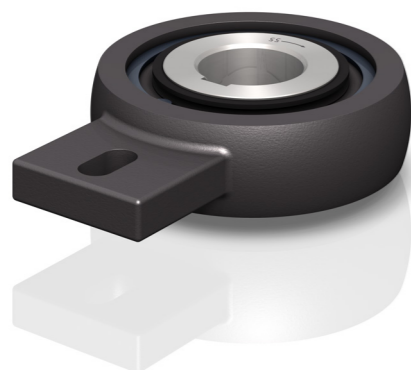
PAPER PLANT MACHINERY



AIRPORT BAGGAGE HANDLING



LARGE BUCKET ELEVATOR



BSEU SERIES

- 15 Bore sizes 20-90mm
- High Torque Capacity
- High Inner race overrunning speeds
- Unique self-lubricating cam roller design
- Lower running temperature = Longer life
- Maintenance Free grease lubricated
- 2 GD enhanced sealing option
- Single energizing springs constant 360° cam engagement

BACKSTOPPING



AGRICULTURAL BUCKET ELEVATOR



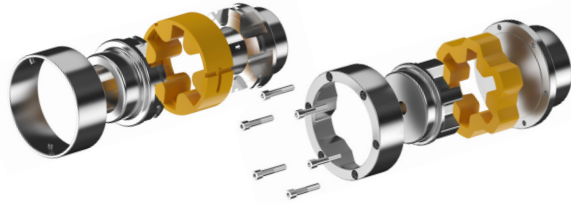
INCLINED CONVEYOR

CHAIN COUPLINGS



- CR Standard Series (24 sizes)
- Bore Range – 9-700mm
- Torque Range – up to 717000Nm
- Aluminium Covers with Seal
- Tsubaki Duplex Chain included
- Hardened Teeth Sprockets
- Stainless Steel option available

ATRA-FLEX COUPLINGS



- | | |
|---|---|
| <p>Millennium Series (16 sizes):</p> <ul style="list-style-type: none"> • Bore Range – 7-405mm • Max. Torque Range – up to 687kNm | <p>T-Flex Series (13 sizes):</p> <ul style="list-style-type: none"> • Bore Range-8-508mm • Max. Torque Range – up to 257.6kNm |
|---|---|
- Standard, High-Temperature & High-Torque, Extra High Dampening Flexible Elements.
 - Spacer, Limited End Float, Flywheel, Floating Shaft and Axial Slide versions available.
 - Stainless Steel and Corrosion Resistant Nitrocarburized Coating options available

ZIP CHAIN ACTUATORS



- 3 Standard Sizes with up to 2000N Thrust
- Standard Stroke Length up to 2m (Longer Stroke available)
- Compact Space Saving Design
- High Precision Positioning and Repeatability
- High Speed and Frequency
- Excellent Wear Resistance for Long Life

TORQUE LIMITERS



- TL Standard Series (8 Sizes)
- Bore Range – up to 130mm
- Torque Range – 1.0-9310Nm
- TL – C Standard Coupling Series
- Bore Range – up to 150mm
- Torque Range – 1.0-9310Nm

ALSO AVAILABLE



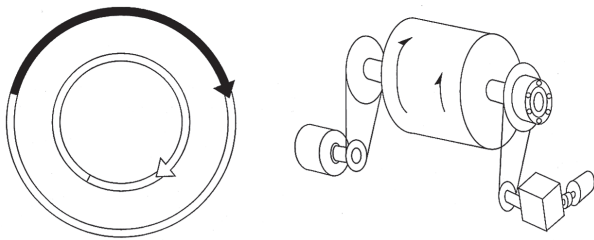
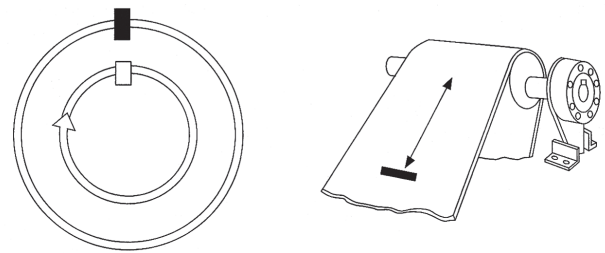
Tsubaki offers the most complete and versatile selection of one-way clutches in the industry.

Cam Clutches are precision devices which lock the inner and outer races, through the wedging action of cams, to transmit torque in one direction of rotation and overrun in the opposite direction. These units are often referred to as freewheels, sprag, overrunning, indexing, backstop or one-way clutches, depending upon their application.

Tsubaki Cam Clutch products are designed to transmit torque in one direction of rotation and overrun (freewheel) in the opposite direction of rotation. All Tsubaki Cam Clutch products utilize the same principles of operation. Tsubaki offers various series of products to address the many types of applications where Cam Clutch products are most often used. The three most common types of applications are listed below:

Backstopping

Clutches are used to prevent reverse rotation of drive shafts which may cause damage to machinery and expensive equipment. The inner race can overrun freely in one direction of rotation. Reverse rotation is instantaneously prevented by the automatic engagement of the clutch. Typical backstop applications are in inclined conveyor systems, gear reducers and industrial fans. Tsubaki has pioneered the non-rollover design.

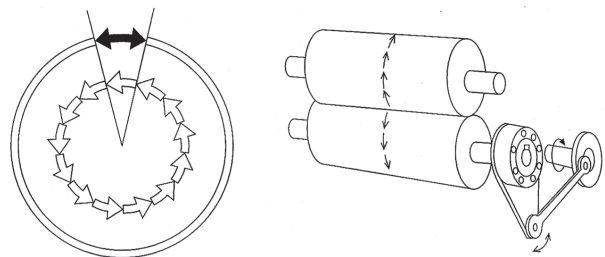


Overrunning

These clutches spin freely the majority of the time, occasionally being called upon to lock up and drive. Typical is a two-speed drive, where the machine is driven by either an electric motor or geared motor. When the gearmotor drives at low speed the clutch engages. When the faster electric motor drives, the clutch overruns, automatically switching between low speed and high speed.

Indexing

Reciprocating motion applied to the clutch transforms into one-direction motion. A crank mechanism provides reciprocating motion to drive the Cam Clutch. The clutch drives in the forward stroke (index) and overruns on the return stroke, indexing the feeding roller forward.



TSUBAKI CAM CLUTCHES ARE PERFECT FOR:

- Air cleaning plants
- Agricultural machinery
- Bucket elevators
- Compressors
- Inclined or vertical conveyors
- Cranes and hoists
- Dry cleaning machinery
- Duplicator equipment
- Fish net machinery
- Heat-treatment furnaces
- Induced draft fans
- Multi-state conveyors
- Packaging machinery
- Printing machinery
- Inclined or vertical Pumps
- Punch presses and feeders
- Power plants
- Refinery equipment
- Speed reducers
- Standby power units
- Textile looms
- Two-speed grinders
- Two-speed shiftovers
- Washing machinery
- Wire winding machinery

JAPANESE PRECISION



Tsubaki Motion Control is a member of the Industrial Power Transmission division of Tsubakimoto Chain Company in Japan, the world's largest chain manufacturer with manufacturing facilities round the globe and one of the top global producers of freewheels. Built on the foundation of Tsubaki's technical expertise, the Okayama and Nagaokakyo plants are dedicated to the development and production of Tsubaki's unique Motion Control solutions.

Tsubakimoto Europe B.V.

Aventurijn 1200
3316 LB Dordrecht
The Netherlands

Phone: +31 (0)78 620 4000
E-mail: info@tsubaki.eu
Internet: tsubaki.eu

Tsubaki Ibérica Power Transmission S.L.

Avenida del Sol 22
28850 Torrejón de Ardoz, Madrid
Spain

Phone: +34 911 873 450
E-mail: info@tsubaki.es
Internet: tsubaki.es

Tsubakimoto U.K. Ltd.

Osier Drive, Sherwood Park
Annesley, Nottingham NG15 0DX
United Kingdom

Phone: +44 (0)1623 30 66 00
E-mail: sales@tsubaki.uk
Internet: tsubaki.co.uk

Tsubaki Deutschland GmbH

Oskar-Messter-Straße 33
85737 Ismaning
Germany

Phone: +49 (0)89 2000 13380
E-mail: antriebstechnik@tsubaki.de
Internet: tsubaki.de

